

SEPTEMBER 15, 2015

Sewer Separation Project Northeast Industrial District



KANSAS CITY
MISSOURI



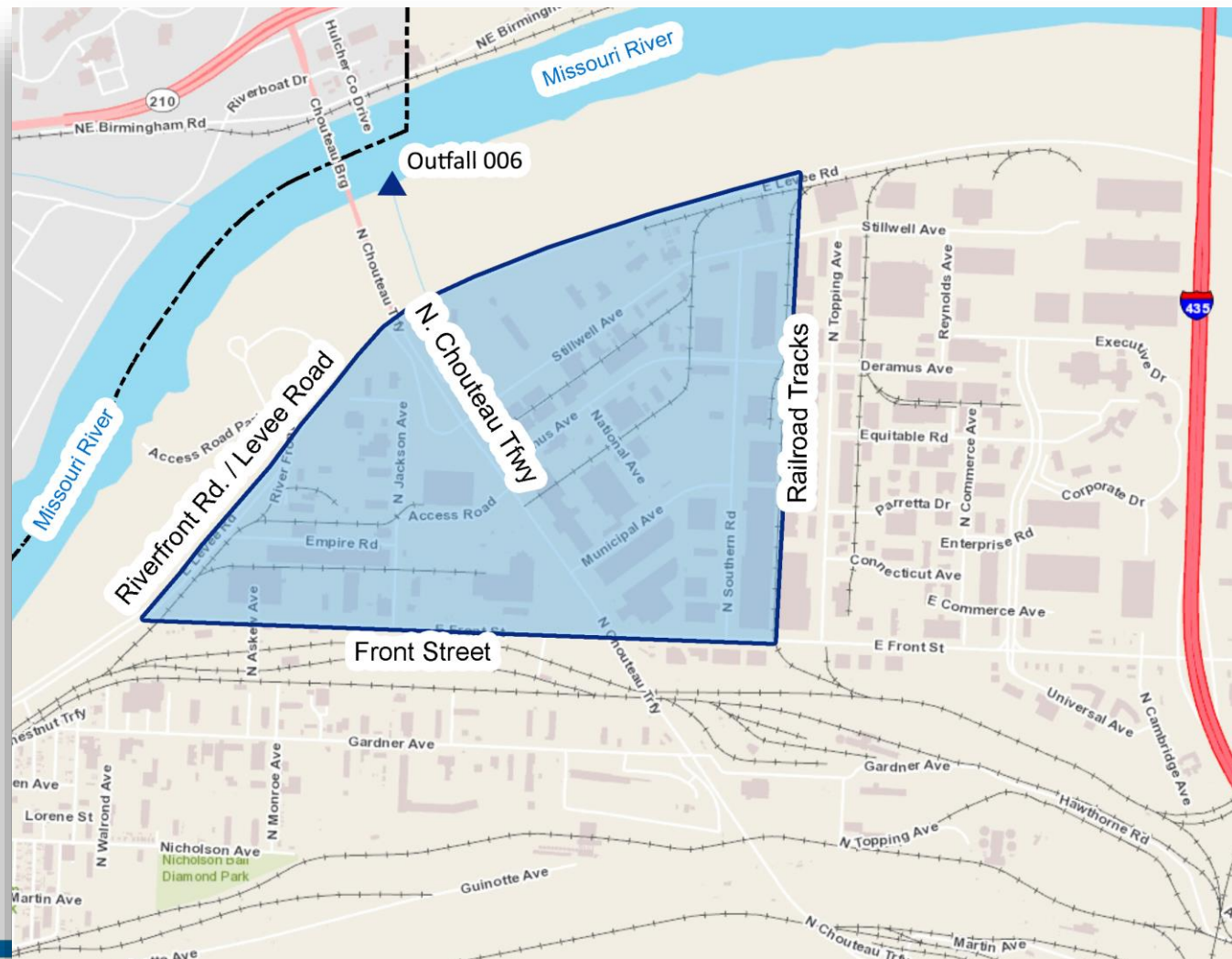
KCWATER
SERVICES

Project Goals



- Separate storm sewer and sanitary sewer in project area.
- Improve water quality by eliminating overflows of diluted sewage at Outfall 006.
- Improve the sanitary sewer and stormwater services.

Project Area



Project Area

Sewer Separation Project Details

- Separate 445 acres of combined sewer system
- Construct approx. 12,700 feet of new public sanitary sewers
- Construct approx. 6,400 feet of private sanitary sewers
- Repurpose existing combined sewer as separate storm sewer system
- Construct new pump station



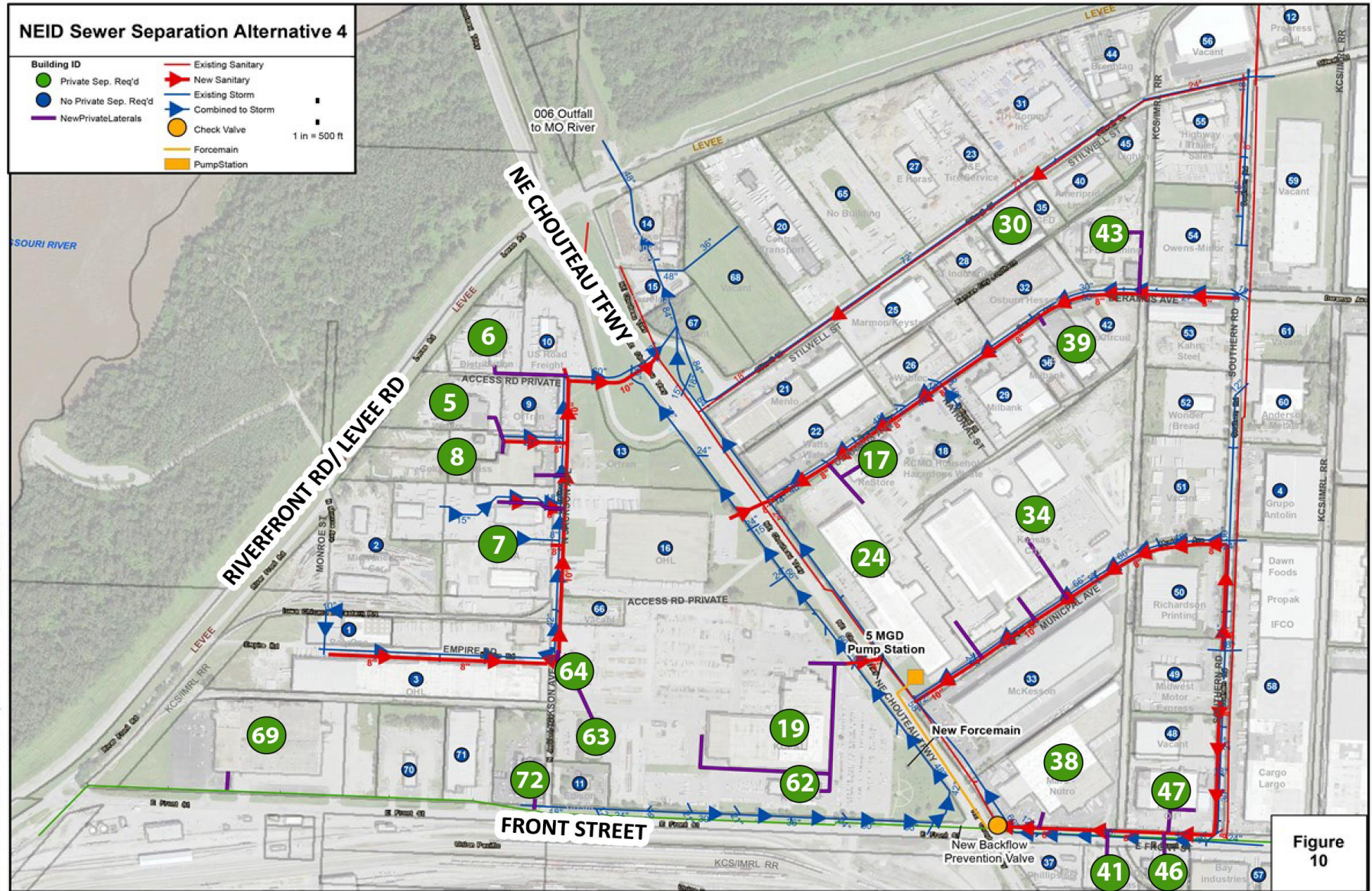
**Est. Total Project Cost:
\$13,500,000**

Field Work Completed to Date

- Investigated sanitary service laterals from 72 properties
- Determined connectivity between service laterals and storm lines and of larger sanitary and storm sewers
 - Used small CCTV push cameras
 - Used dyed water testing
 - CCTV in larger public sewers
- 20 Properties had external connections between service lateral and storm sewers
- 6 of those 20 properties had internal connections



Proposed Sewer Improvements and Pump Station

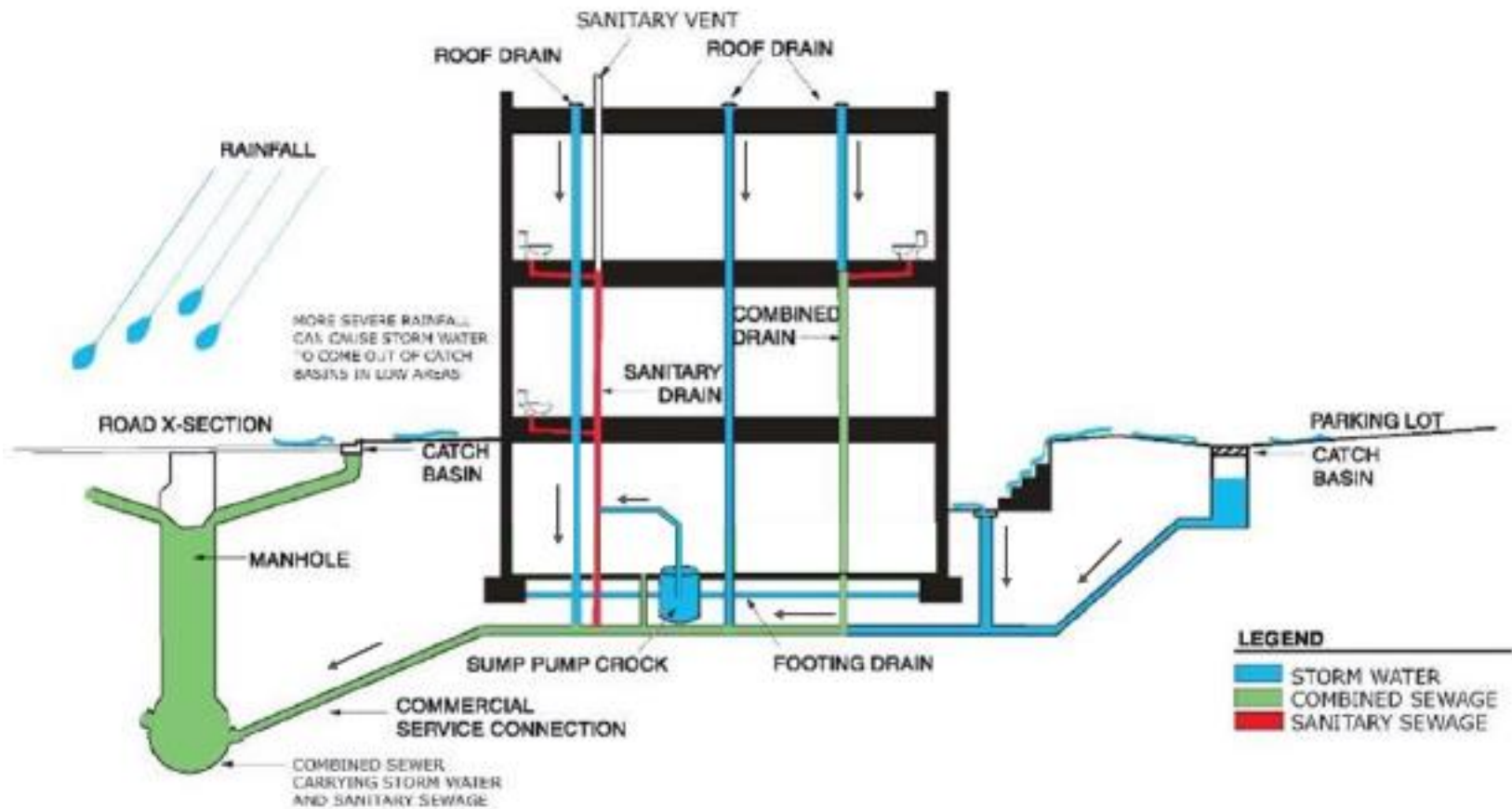


Private Property Separation

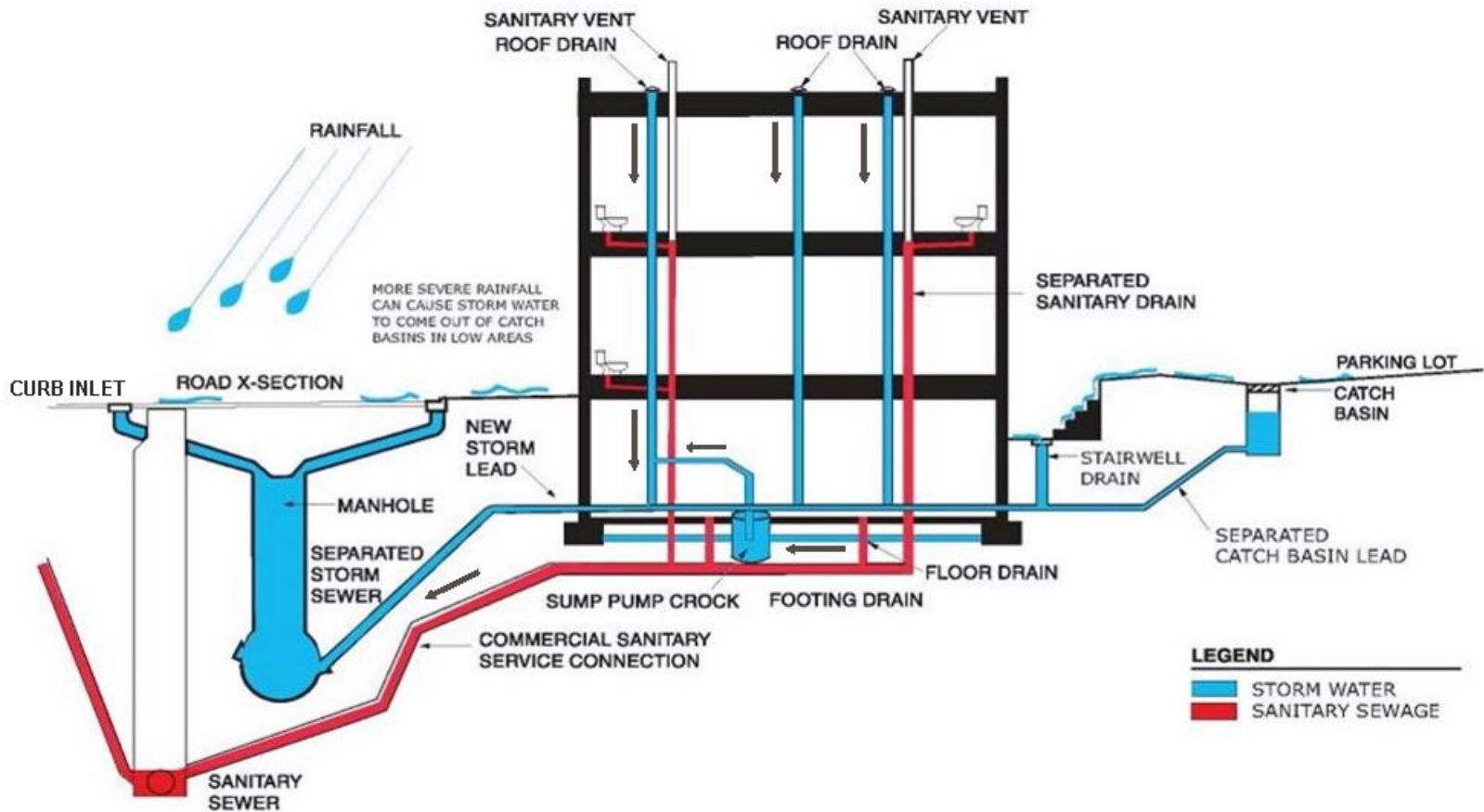
- Separate stormwater connections from the private sewer service lateral on 20 properties at **no cost** to the owner.
- KC Water Services will:
 - Survey each site to locate existing utilities
 - Develop a plan to separate stormwater and sanitary sewer on each site
 - Meet with each property owner to discuss the plan
 - Schedule and construct the new sanitary and/or storm sewer

20 Private Property Service Lateral Separations

- The following 20 properties were identified during field investigations to have separate stormwater connections into their sanitary sewer service laterals:
 - ID #5 – Carter Waters
 - ID #6 – Mo-Kan Distribution
 - ID #7 – SAIA
 - ID #8 – Columbia Glass
 - ID #17 – Habitat ReStore
 - ID #19 – KCP&L
 - ID #24 – Gerdau
 - ID #30 – L.I.T.
 - ID #34 – City of Kansas City
 - ID #38 – Mars-Nutro
 - ID #39 – JS Logistics
 - ID #41 – Dry Basement
 - ID #43 – KCFD Training
 - ID #46 – Dry Basement
 - ID #47 – Allied Oil
 - ID #62 – KCP&L
 - ID #63 – KCP&L
 - ID #64 – KCP&L
 - ID #69 – Sears Outlet
 - ID #72 – Siemens



EXISTING COMBINED SEWER SYSTEM TYPICAL COMMERCIAL BUILDING ENVIRONMENT



PROPOSED SEPARATED SEWER SYSTEM

TYPICAL COMMERCIAL BUILDING ENVIRONMENT

On-Going Work

- Develop 3 Construction Bid Packages
 - New Sanitary Sewer
 - Private Property Separation
 - Pump Station and Force Main
- Conduct additional outreach for private property improvements
- Complete survey of private property sites and meet with 20 property owners

Overall Schedule





Question and Answer